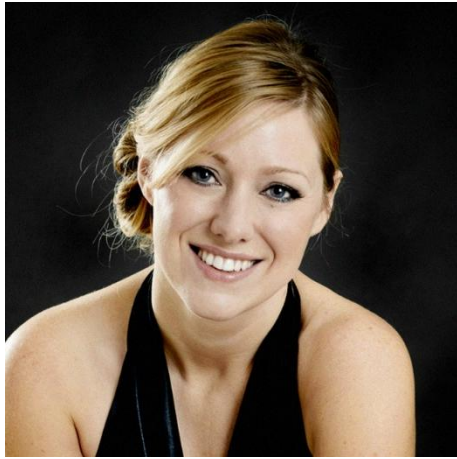


Sophie Bevan

Soprano



© Sussie Ahlburg

“Sophie Bevan’s impressive tonal range, convincingly leaves us in doubt as to the fertility of her imagination.”

Evening Standard

Recognised as one of the leading lyric sopranos of her generation, **Sophie Bevan** was made an MBE for services to music in the Queen's Birthday Honours in 2019.

Sought after for her work in opera, Sophie's engagements include **Susanna** (*Le nozze di Figaro*), **Ilia** (*Idomeneo*), **Pamina** (*Die Zauberflöte*) and **Dalinda** (*Ariodante*) for the Royal Ballet & Opera; **Ellen Orford** (*Peter Grimes*) for the Teatro dell'Opera in Rome; **Beatriz** in Thomas Adès' *The Exterminating Angel* at the Salzburg Festival, Royal Ballet & Opera and Metropolitan Opera; **Freia** (*Das Rheingold*) and **Pamina** at the Teatro Real in Madrid; **Mélisande** (*Pelléas et Mélisande*) for Semperoper Dresden and at the Aldeburgh Festival; **Michal** (*Saul*) for the Glyndebourne Festival; **Governess** (*The Turn of the Screw*) for Garsington Opera and **Fiordiligi** (*Così fan tutte*) for Welsh National Opera. Her many roles for the English National Opera include **Hermione** in Ryan Wigglesworth's *The Winter's Tale*, **Micaëla** (*Carmen*); **Penelope** (*Gloriana*); **Télaïre** (*Castor and Pollux*) *Messiah* and *The Seven Deaths of Maria Callas*.

She works regularly with leading orchestras worldwide and with conductors including Sir Antonio Pappano, Daniel Harding, Andris Nelsons, Edward Gardner, Laurence Cummings, Sir Mark Elder, Ivor Bolton and Mirga Gražinytė-Tyla. Recent highlights include Beethoven's *Ah! Perfido*, Haydn's *Die Jahreszeiten*, Oliver Knussen's *Whitman Settings* and Ryan Wigglesworth's *Augenlieder* all with the London Philharmonic Orchestra; Strauss' *Vier letzte Lieder* with the Philharmonia Orchestra; Britten's *Les Illuminations* with the BBC Philharmonic Orchestra, the Aurora Orchestra and the

Finnish Radio Symphony Orchestra; Fauré's *Requiem* and Haydn's *Nelson Mass* with the Netherlands Radio Philharmonic Orchestra; Bach's *Matthäuspassion* with the Royal Concertgebouworkest; Handel's *Messiah* with the Orchestra of the Age of Enlightenment; Mahler's Symphony No. 4 with the Hallé Orchestra and *Mélisande* in concert performances of *Pelléas et Mélisande* with the BBC Scottish Symphony Orchestra. She has also appeared at the BBC Proms and the Aldeburgh, Edinburgh and Tanglewood Festivals.

An acclaimed recitalist, she has appeared with pianists including Julius Drake, Malcom Martineau, Ryan Wigglesworth, Christopher Glynn and Graham Johnson at venues including Wigmore Hall, Het Concertgebouw and the Aldeburgh and Oxford International Song Festivals.

Sophie studied at the Royal College of Music where she was awarded the Queen Mother Rose Bowl for excellence in performance. She was the recipient of the 2010 Critics' Circle award for Exceptional Young Talent, The Times Breakthrough Award at the 2012 South Bank Sky Arts Awards, and the Young Singer Award at the 2013 inaugural International Opera Awards. She lives in Oxfordshire with her husband, three children and two cocker spaniels.

Valid for use in 2025/26 season
For updated versions please contact
info@rayfieldallied.com